



Windyrush Country Club—Christmas 2010

**Happy
Thanksgiving,
Merry
Christmas, &
Happy
Holidays!!**

November/December 2011

In this issue:

Board Update	1
November Calendar	3
Tennis Information	5
Board Minutes	7

Volume 4, Issue 9

Windyrush News

Dear Windyrush Members,

Many thanks to all of you who attended the Annual Membership Meeting on November 14! We had a good turn-out and a good meeting. Bob Stone provided a recap of 2011, which was a great year at Windyrush. Many, many improvements have been made to the property, and we are so thankful that we have been able to enjoy the new buildings. We had some wonderful social events this year, a great swim team season, and a tennis program that is growing and growing.

We also voted to amend the by-laws to change the fiscal year, a change that should be very helpful for getting the budgets approved by the membership at the annual meeting. If you have any questions about that, please let us know. We also voted on the 2012 board positions, and we would like to welcome Mark Wilson and Bridget Ervin to the 2012 Windyrush board!

Ed Riesmeyer presented a building proposal that is very exciting, and pictures have been posted on page 8 of this newsletter. We are still in the process of finalizing plans and researching financing, but the ideas that have been presented by the builder are exciting.

More details about the Annual Membership Meeting can be found on the Windyrush website (www.Windyrush.com). We are looking forward to a wonderful year at Windyrush in 2012. Please tell your friends about Windyrush and encourage them to join us at the club!

Thank you!

Windyrush Board



WINDYRUSH COUNTRY CLUB

6441 Windyrush Road

Tel: 704-542-9645

E-mail: office@windyrush.com

www.windyrush.com

Property hours are 8:00am-10:00pm

The Windyrush Board of Directors

Bob Stone, President

Ed Riesmeyer, Vice President

Jody Billiard, Treasurer

Catie Jackson, Secretary

Susan Nelson, At-Large

Mark Wilson, At-Large

Bridget Ervin, At-Large

Anne Sorrells, At-Large

Lisa Ryan, At-Large

OFFICE NOTES

Yearly membership invoices have been mailed. If you did not receive your 2012 membership invoice or if you are not renewing your membership please notify Phyllis Smith at office@windyrush.com.

Please remember to pay for your tennis guests. The guest fee collection box is located on the fence at the entrance to the soft courts. The guest fee during the week is **\$3.00. On nights and weekends the fee is **\$5.00**.**

Place your add here

If you would like to advertise in the monthly newsletter please send your information to Phyllis Smith at office@windyrush.com

1/4 page \$25.00

1/2 page \$50.00

Full page \$75.00

Reminder-Property Hours

Please remember that the Windyrush property gates are locked between the hours of 10:00pm-8:00am (with the exception of Monday night football). If you have an event that will be held past 10:00pm please contact the office to make arrangements.



Please remember Windyrush is a no smoking facility.



November 2011

SUN	MON	TUE	WED	THU	FRI	SAT
	Monday-Friday 3 & Me from 9am-1pm Contact Hank for details!	1 3& Me Private lessons Jr. Clinics	2 3& Me 9:30am Clinic Private Lessons Jr. Clinics	3 3& Me Ladies Night Clinic 6-7pm Private lessons No Clinics	4 3& Me Private Lessons	5 Men's QCT 8:15-10:00am Courts 1-5
6	7 Men's Night No Clinics	8 Private lessons Jr. Clinics	9 No Clinics	10 Ladies Night Clinic 6-7pm Jr. Clinics	11 No Clinics Veterans Day	12 Men's QCT 8:15-10:00am Courts 1-5
13	14 3& Me Men's Night Private lessons Jr. Clinics Annual Meeting	15 3& Me Private Lessons Jr. Clinics	16 3& Me 9:30am Clinic Private Lessons Jr. Clinics	17 3& Me Ladies Night Clinic 6-7pm Private lessons Jr. Clinics	18 3& Me Private Lessons	19 Men's QCT 8:15-Courts 1-5
20	21 3& Me Men's Night Private lessons Jr. Clinics	22 3& Me Private Lessons No Clinics	23 No Clinics	24 Thanksgiving! No Clinics	25 No Clinics	26 Men's QCT 8:15-10:00am Courts 1-5
27	28 3& Me Men's Night Private lessons Jr. Clinics	29 3& Me Private Lessons Jr. Clinics	30 3& Me 9:30am Clinic Private Lessons Jr. Clinics			

Mark Your Calendars

November 14 Annual Membership Meeting 7pm at Olde Providence Elementary School

Monday Nights-Please remember courts 1,2,3, are reserved on Monday nights for Men's night and court 4 for private lessons until 8 pm. The upper hard courts 5 & 6 are available until dark.

Thursday Nights-On Thursday nights women have courts 1,2,3, reserved for Ladies Night 6pm-10pm and court 4 for private lessons until 8 pm. The upper hard courts are available until dark.

Windyrush Spooktacular Halloween Event!

Windyrush hosted a great Halloween celebration this year! I want to send a **HUGE THANK YOU** to all of the members who volunteered for this event. Anne Sorrells, Lisa Ryan, Jenny Taylor, Samantha Taylor, Ben Taylor, Ashley Gordon, Joanna Purgason, Keegan Smith, Sarah Grace Young, Frances Isaac, Angie Tynan, John Tynan, Kevin Grayson, Laura Grayson, Sarah Malik, Brigit Ervin, Kim Rusch , Kelsey Getsinger, Johanna Remes, Mary Kate Ryan, and Kimberly Young.

Please watch out for details regarding winter socials at Windyrush! Looking forward to December's holiday events: Winter Wonderland Party and Christmas Movie Night!

—Susan Nelson



Please consider serving on the socials committee at Windyrush. Susan has SO many wonderful ideas and can always use more hands! Please contact Phyllis or Susan if you are interested in serving on this committee. Thank you!



2011 Fall and Christmas Tennis Schedule

Tennis Clinic Costs:

\$8 1/2 Hour Clinic

\$14 1 Hour Clinic

Mondays

3:30 - 4:00pm 8 and under

Tuesdays

3:30 - 4:00pm 8 and under

4:00 - 5:00pm 12 and under

5:00 - 6:00pm Open clinic 5:00 - 6:00pm advanced must be approved by Hank

Wednesdays

4:00 - 5:00pm 12 and under

Thursdays

3:30 - 4:00pm 8 and under

4:00 - 5:00pm Open clinic 4:00 - 5:00pm 12 and under

5:00 - 6:00pm advanced must be approved by Hank

Month/ Dates/ No Clinic Days:

November: session: Nov 1,2,3,7,8,9,14,15,16,17,28,29,30 school closed Nov 10,11,22,23,24

December session: Dec 1,5,6,7,8,12,13,14,15,19,20,21,22 school closed Dec 19,20,21,22,23,26,27,28,29,30

Special Event: Dates Requirements Times for Camp Cost

December Christmas Camp: Dec 19,20,21,22 Minimum: 4, Maximum 16

10:00 am to 12:00 pm \$80

Private lessons are available Monday - Friday before and after clinics



3 & Me Tennis Clinics

3 & Me tennis clinics now through the end of November.

Clinics will be 1 hour long. Work on double strategy, stroke and improving your game from a level 2.0 to 5.0!

Time: Beginning at 9am until 1pm hour long clinics will be offered

Days: Monday-Friday (except for Holidays)

Cost: \$15.00 per person

Sign Up: Contact Hank Avants tennis@windyrush.com or call 704-616-9345

Tennis pavilion rental policy:

Are you looking for a place to have a party? The tennis pavilion At Windyrush is a great option. The pavilion can hold 75 people; no more than 35 people upstairs. The fee is \$50.00 plus \$3.00 per person. The fee will be capped at \$200.00. Trash and clean up is your responsibility. A refundable deposit of \$100.00 is required and the pavilion must be reserved 7 days in advance. Music must be off at 10:00pm for all events. Please contact Phyllis at office@windyrush.com to receive a party request form and for any further information.



Thank You!!

The Windyrush board would like to extend their appreciation to Ken Orr and Bradley Michael for their time and dedication serving on the board. After six years of service Ken Orr will be leaving his position of At-large (pool and grounds). His time and dedication have been very much appreciated. Bradley served two years as an At-large (marketing and pool) board member. He is stepping down to dedicate more time to his wife and precious 7 month old son. Thank you to both of these men as they leave the board!



Questions to the Board

This year the Windyrush Board asked members to send in any questions that could be answered at the board meeting. These questions are answered below!

- Will the dues go up every year? That is assessed by the Board on a year by year basis, but at the current time we do not anticipate any further increases.
- Will we have another assessment for the next phase? We do not current have plans for another assessment.
- Did our previous assessments get comingled with the operating account or do these funds go into a capital reserve account? We collected approximately \$123k in assessments and all of that money, as well as bank loans and operating cash reserves, was used to fund \$455k in club improvements (\$200k for baby pool, \$255k for tennis pavilion).
- How much is left to pay for completion of final phases? As noted in the Annual Meeting, the plans are being revisited, revised and re-estimated.
- Does Windyrush have a reserve account for the current project? All assessment dollars have been spent on the project.
- Do new member joining fees go to operating or reserves? Historically, the Club has used initiation fees to support operations.
- Will the club consider opening early on Sundays? We will discuss this as a board and assess the costs.

Windyrush Annual Membership Meeting
November 14, 2011
7:00 pm
Olde Providence Elementary School

Board Members Present: Bob Stone, President; Ed Riesmeyer, VP; Jody Billiard, Treasurer; Catie Jackson, Secretary; Ken Orr, At-large (pool); Susan Nelson, At-large (socials); Lisa Ryan, At-large (marketing); Anne Sorrells, At-large (tennis); Bradley Michaels, At-large (pool/marketing)

Meeting called to order at 7 p.m.

Motion to approve the 2011 Annual Membership Meeting Agenda. The agenda was seconded and approved. Motion to approve the 2010 Windyrush Annual Membership Meeting Minutes. Motion was seconded and approved.

Welcome & Opening Remarks – Bob Stone

Bob introduced the board, Hank Avants, Phyllis Smith, & Allison Nelson

Motion to make a by-law change regarding the fiscal year. (Article IV, Section X & Article VII, Section I). The motion was seconded and approved.

2012 Board Elections

The nominees introduced themselves.

Bob explained the nomination process & asked if there were any nominations from the floor.

Voting Results: Ed Riesmeyer, VP; Jody Billiard, Treasurer; Bridget Ervin, At-large (Marketing/pool); Mark Wilson, At-large (pool); Anne Sorrells, At-large (tennis)

Building Committee Update – Ed Riesmeyer

Ed provided an update & presented the drawings for a future bathhouse/snackbar/pool entrance/lifeguard office.

Bob provided information regarding the financing; estimated cost of next phase is \$300,000 & \$100,000 for the removal & cleanup of current poolhouse.

These are proposals but will be decided on within the next few months.

Financial Report – Jody Billiard

Jody presented a Financial Report: 2011 Expenses and a Financial Report: 2012 Budget

Q & A

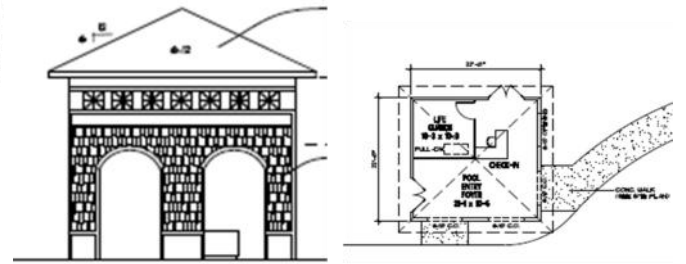
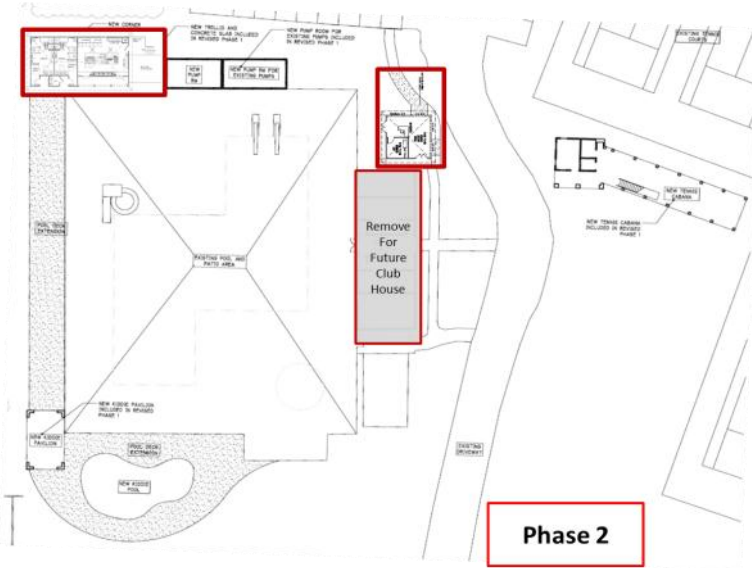
Could we consider opening earlier on Sunday? We will consider making the hours longer at the next board meeting.

There was a question about the use of the assessment – all of this has been used as part of the building project. We will clarify that we do not currently plan to have another assessment & the financing.

Meeting adjourned at 8:51

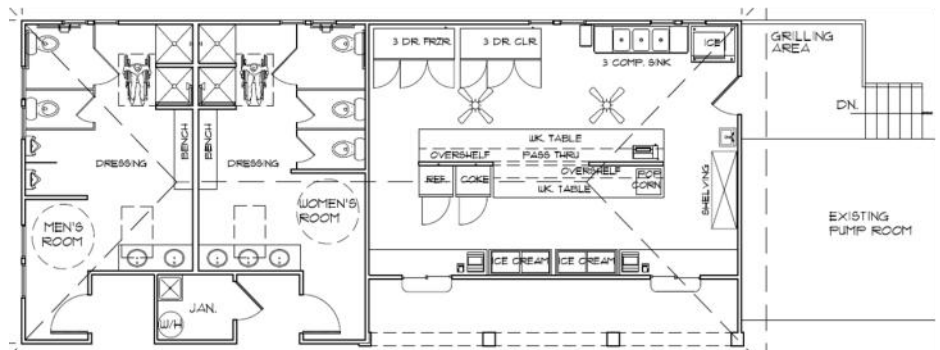
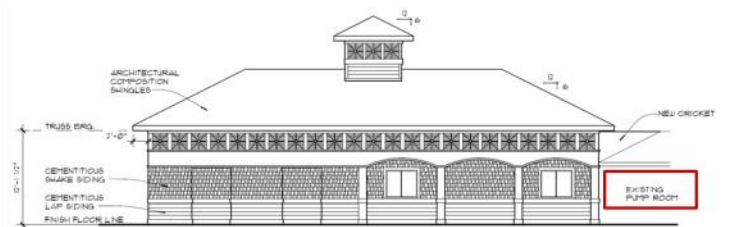
Construction Plans (Draft)

The following drawings were shared at the Annual Meeting on November 14th. They are still being revised but do represent the current goals for “Phase 2” of the master site plan. This phase will relocate the snack bar and provide new restrooms and an improved entryway to the pool. This will also prepare the site for the demolition and reconstruction of the clubhouse (at a future date) with minimal disruption to pool & tennis operations.



New entry elevation & floorplan

Revised site plan showing new entry, snack bar & restrooms.



Snack bar & bath house elevation & floorplan